

Wall mount Projector Speaker PS-1310 PS-1510 PS-1620



Waterproof Unidirectional Speaker, designed in ABS material, 3 inch, 5 inch, 6 inch full range speaker, rated power 10W, 10W and 20 Watts, use for commercial audio system or public address system (pa system) of input voltage 100 volt. Fast installation with strong mounting bracket. It is durable and practical and very competitive to use for train station, parking area, playground, shopping mall, factory, etc.

Features

- Outdoor use waterproof 3" (PS-1310) / 5" (PS-1510) / 6" speaker (PS-1620);
- Rated power 10 Watts (PS-1310), 10 Watts (PS-1510), 20 Watts (PS-1620);
- Input voltage 100 Volt;
- Sensitivity 88dB (PS-1310) / 89dB (PS-1510) / 90dB (PS-1620);
- Frequency Response 130~18KHz (PS-1310) / 120~18KHz (PS-1510) / 110~18KHz (PS-1620)
- Wall mount speaker, strong mounting bracket;
- ABS material body, white color;
- Dimension ϕ 110x170mm (PS-1310) / ϕ 138x205mm (PS-1510) / ϕ 170x245mm (PS-1620)

Specification

Model No.	PS-1310	PS-1510	PS-1620
Rated Power & Power Tabs	10W	10W	20W
Speaker	Full range 3" speaker	Full range 5" speaker	Full range 6" speaker
Input Voltage	100V Line		
Sensitivity	88 dB	89 dB	90 dB
Frequency Response	130-18KHz	120-18KHz	110-18KHz
Mounting Method	Wall mounting bracket		
Color	White		
Dimension	ϕ 110x170mm	ϕ 138x205mm	ϕ 170x245mm
Weight	1.4 kg	1.6 kg	1.9 kg

Outdoor Bi-directional Wall Mount Projector Speaker PS-2520



Waterproof Bi-directional Projector Speaker, designed in ABS material, dual 5.25 inch full range speaker, rated power 20 Watts, use for commercial audio system or public address system (pa system) of input voltage 100 volt. Fast installation with strong mounting bracket. It is durable and practical and very competitive to use for train station, parking area, playground, shopping mall, factory, etc.

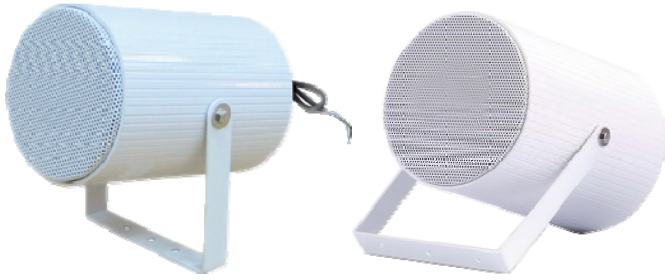
Features

- Dual 5.25" full range speaker for each side, bi-directional speaker;
- All weather use, waterproof projector for outdoor;
- Rated power 20 Watts;
- Input voltage 100 Volt;
- Sensitivity 88dB;
- Frequency Response 120~20KHz;
- Wall mount speaker, strong mounting bracket;
- ABS material body, white color;
- Dimension ϕ 146x200mm

Specification

Model No.	PS-2520
Rated Power	20W
Speaker	Full range 5.25" speaker x 2
Input Voltage	100V Line
Sensitivity	88 dB
Frequency Response	120-20KHz
Mounting Method	Wall mounting bracket
Color	White
Dimension	ϕ 146x200mm
Weight	1.9 kg

Wall mount Projector Speaker PS-3510 PS-3620



Waterproof Unidirectional Speaker, designed in aluminium material, 5 inch and 6 inch full range speaker, rated power 10W and 20 Watts, use for commercial audio system or public address system (pa system) of input voltage 100 volt. Fast installation with strong mounting bracket. It is durable and practical and very competitive to use for train station, parking area, playground, shopping mall, factory, etc.

Features

- Outdoor use waterproof 5" (PS-3510) / 6" speaker (PS-3620);
- Rated power 10 Watts (PS-3510), 20 Watts (PS-3620);
- Input voltage 100 Volt;
- Sensitivity 89dB (PS-3510) / 90dB (PS-3620);
- Frequency Response 120~18KHz (PS-3510) / 110~18KHz (PS-3620)
- Wall mount speaker, strong mounting bracket;
- Aluminium material body, white color;
- Dimension ϕ 138x205mm (PS-3510) / ϕ 170x252mm (PS-3620)

Specification

Model No.	PS-3510	PS-3620
Rated Power	10W	20W
Speaker	Full range 5" speaker	Full range 6" speaker
Input Voltage	100V Line	
Sensitivity	89 dB	90 dB
Frequency Response	120-18KHz	110-18KHz
Mounting Method	Wall mounting bracket	
Color	White	
Dimension	ϕ 138x205mm	ϕ 170x252mm
Weight	2.4 kg	3 kg

Outdoor Bi-directional Wall Mount Projector Speaker PS-4510 PS-4620



Waterproof Bi-directional Projector Speaker, designed in aluminium material, dual 5 inch and 6 inch full range speaker, rated power 10W and 20 Watts, use for commercial audio system or public address system (pa system) of input voltage 100 volt. Fast installation with strong mounting bracket. It is durable and practical and very competitive to use for train station, parking area, playground, shopping mall, factory, etc.

Features

- Outdoor use waterproof dual 5" (PS-4510) / dual 6" speaker (PS-4620) for each side of bi-directional use;
- Rated power 10 Watts (PS-4510), 20 Watts (PS-4620);
- Input voltage 100 Volt;
- Sensitivity 89dB (PS-4510) / 90dB (PS-4620);
- Frequency Response 120~18KHz (PS-4510) / 110~18KHz (PS-4620)
- Wall mount speaker, strong mounting bracket;
- Aluminium material body, white color;
- Dimension ϕ 138x205mm (PS-4510) / ϕ 170x252mm (PS-4620)

Specification

Model No.	PS-4510	PS-4620
Rated Power	10W	20W
Speaker	Full range 5" speaker x 2	Full range 6" speaker x 2
Input Voltage	100V Line	
Sensitivity	89 dB	90 dB
Frequency Response	120-18KHz	110-18KHz
Mounting Method	Wall mounting bracket	
Color	White	
Dimension	ϕ 138x205mm	ϕ 170x252mm
Weight	2.8 kg	3.5 kg