

Mini Wall Mount Speaker BS-10



Wall mount speaker BS-10, designed in ABS body, with a 2-way 2.5 inch speaker driver and 1 inch tweeter, rated power 6-10 Watts, versalite use for home audio system or public address system (pa system) of input voltage 70/100 volt and power tabs at 1/2, 1/4 power or 8Ω. Fast installation wall mounting bracket and angle adjustable. The speaker also can be used for small home theater system. It is durable and practical and very competitive to satisfy medium or high level architecture sound system.

Features

2-way 2.5" speaker driver and 1" tweeter;

Rated power 6-10 Watts, max power 20 Watts;

Input voltage 70/100 Volt, power tabs at 1/2, 1/4 power or 8Ω;

Sensitivity 90±3 dB;

Frequency Response 145~20KHz

Adjustable wall mount speaker with wall mounting parts;

Strong ABS material body;

Dimension 95x100x141mm

Weight:1.1kg

Specification

Model No.	BS-10
Rated Power / Max Power	6-10W / 20W
Speaker	2-way 2.5" speaker driver + 1" tweeter
Input Voltage	70/100V Line and power tabs at 1/2, 1/4 power and 8Ω switchable
Sensitivity	90±3dB
Frequency Response	145-20KHz
Mounting Method	Onwall mounting speaker
Colour	Black or White
Dimension	95 x 100 x 141 mm
Weight	1.1 kg

Wall Mount Speaker BS-15



Wall mount speaker BS-15, designed in ABS body, with a 2.5 inch speaker driver and special sound reflex design, rated power 15-20 Watts, versalite use for home audio system or public address system (pa system) of input voltage 70/100 volt (or 8Ω). Fast installation wall mounting bracket and 180° angle adjustable. The speaker also can be used for small home theater system. It is durable and practical and very competitive to satisfy medium or high level architecture sound system.

Features

2.5" speaker driver;

Rated power 15-20 Watts, max power 30 Watts;

Input voltage 70/100 Volt (or 8Ω);

Sensitivity 84±3 dB;

Frequency Response 150~20KHz

Adjustable wall mount speaker with wall mounting parts;

Strong ABS material body;

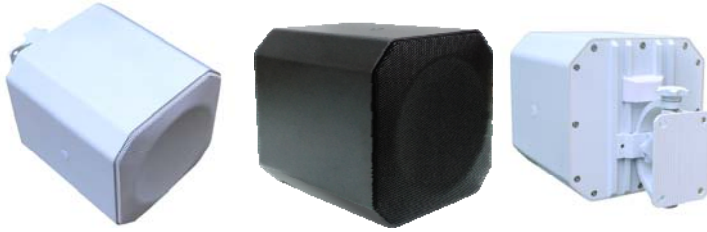
Dimension 80x142x190mm

Weight:1.2kg

Specification

Model No.	BS-15
Rated Power / Max Power	15-20W / 30W
Speaker	2.5" speaker driver
Input Voltage	70/100V (or 8Ω)
Sensitivity	84±3dB
Frequency Response	150-20KHz
Mounting Method	wall mounting speaker
Colour	Black or White
Dimension	80 x 142 x 190 mm
Weight	1.2 kg

All Weather Wall Mount Speaker BS-36



Outdoor Wall mount speaker BS-36, designed in aluminium body and alu grille, with a 5 inch waterproof speaker, rated power at 30-60 Watts, use for commercial audio system or public address system (pa system) of input voltage 70/100 volt (or made impedance at 8Ω) and power tabs at full and 1/2 power. Fast installation wall mounting bracket and angle adjustable 360 degree. The speaker also can be used for home audio system in low impedance audio system or array system. It is durable and practical and very competitive to satisfy medium or high level architecture sound system.

Features

Waterproof 5" speaker driver;

Rated power 30 Watts, max power 60 Watts;

Input voltage 70/100 Volt (or impedance at 8Ω), power tabs at 1/2 power;

Sensitivity 90±3 dB;

Frequency Response 120~18KHz

360° adjustable wall mount speaker with alu wall mounting parts;

Strong aluminium material body;

Dimension 140x140x140mm

Weight:3.5 kg

Specification

Model No.	BS-36
Rated Power / Max Power	30W / 60W
Speaker	5" speaker driver
Input Voltage	70/100V (or 8Ω)
Sensitivity	91±3dB
Frequency Response	120-18KHz
Mounting Method	Onwall mounting speaker
Features	Waterproof & 360° adjustable
Material & Finish	Aluminium body, Black / White
Dimension	140 x 140 x 140 mm
Weight	3.5 kg

Wall Mount Speaker BS-120



Wall mount speaker, designed in ABS body, with a 2-way coaxial 3.5 inch speaker, rated power 40 Watts, use for home audio system or public address system (pa system) of input voltage 70/100 volt and power tabs at 1/2, 1/4 power or 8Ω. Fast installation wall mounting bracket and angle adjustable. The speaker also can be used in home theater system. It is durable and practical and very competitive to satisfy medium or high level architecture sound system.

Features

2-way coaxial 3.5" speaker;

Rated power 20 Watts, max power 40 Watts;

Input voltage 70/100 Volt, power tabs at 1/2, 1/4 power or 8Ω;

Sensitivity 86±3 dB;

Frequency Response 90~20KHz

Adjustable wall mount speaker with wall mounting parts;

Strong ABS material body;

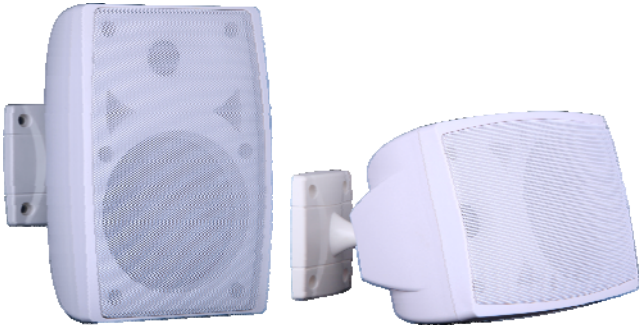
Dimension 128x128x131mm

Weight:1.5kg

Specification

Model No.	BS-120
Rated Power / Max Power	20W / 40W
Speaker	2-way coaxial 3.5" speaker
Input Voltage	70/100V Line and power tabs at 1/2, 1/4 power or 8Ω
Sensitivity	86±3dB
Frequency Response	90-20KHz
Mounting Method	Onwall mounting speaker
Colour	White
Dimension	128 x 128 x 131 mm
Weight	1.5 kg

Wall mount Speaker BS-131 BS-132



Wall mount speaker, designed in ABS material, 2-way 4 inch, 5 inch woofer and 1 inch tweeter speaker, rated power 15W and 25 Watts, use for Commercial audio system or public address system (pa system) of input voltage 100 volt. Fast installation with strong mounting bracket and allows 360° rotatable. It is durable and practical and very competitive to satisfy medium or high level sound system.

Features

2 way 4"+1" (BS-131) / 5"+1" speaker (BS-132);

Rated power 15 Watts (BS-131), 25 Watts (BS-132);

Input voltage 100 Volt;

Sensitivity 95dB (BS-131) / 96dB (BS-132);

Frequency Response 100~20KHz (BS-131) / 90~20KHz (BS-132)

Wall mount speaker, strong mounting bracket, support speaker 360° rotatable;

ABS material body, black or white color for option

Dimension 152x136x227mm (BS-131) / 180x148x263mm (BS-132)

Specification

Model No.	BS-131	BS-132
Rated Power	15W	25W
Speaker	4"woofer + 1" tweeter	5"woofer +1" tweeter
Input Voltage	100V Line	
Sensitivity	95 dB	96 dB
Frequency Response	100-20KHz	90-20KHz
Mounting Method	Wall mounting bracket	
Color	Black / White	
Dimension	152x136x227mm	180x148x263mm
Weight	1.5 kg	1.9 kg

Wall mount Speaker BS-1420 BS-1530 BS-1640



Wall mount speaker, designed in ABS material, 4 inch, 5 inch, 6 inch woofer and 1 inch tweeter speaker, rated power 20W, 30W and 40 Watts, use for commercial audio system or public address system (pa system) of input voltage 100 volt or power switch to 1/2, 1/4 power and 8Ω . Fast installation with strong mounting bracket. It is durable and practical and very competitive to satisfy sound system at economical budget.

Features

- 4"+1" (BS-1420) / 5"+1" speaker (BS-1530) / 6"+1" speaker (BS-1640);
- Rated power 20 Watts (BS-1420), 30 Watts (BS-1530), 40 Watts (BS-1640);
- Input voltage 100 Volt and power tabs of 1/2, 1/4 power or 8Ω;
- Sensitivity 86dB (BS-1420) / 87dB (BS-1530) / 88dB (BS-1640);
- Frequency Response 100~20KHz (BS-1420) / 90~20KHz (BS-1530) / 80~20KHz (BS-1640)
- Wall mount speaker, strong mounting bracket;
- ABS material body, black or white color for option
- Dimension 215x170x150mm (BS-1420) / 242x182x162mm (BS-1530) / 284x215x190mm (BS-1640)

Specification

Model No.	BS-1420	BS-1530	BS-1640
Rated Power & Power Tabs	20W/10W/5W/8Ω	30W/15W/7.5W/8Ω	40W/20W/10W/8Ω
Speaker	4"woofer +1" tweeter	5"woofer +1" tweeter	6"woofer +1" tweeter
Input Voltage	100V Line / 8Ω		
Sensitivity	86 dB	87 dB	88 dB
Frequency Response	100-20KHz	90-20KHz	80-20KHz
Mounting Method	Wall mounting bracket		
Color	Black / White		
Dimension	215x170x150mm	242x182x162mm	284x215x190mm
Weight	2.2 kg	2.6 kg	3.6 kg

Wall Mount Speaker BS-2420 BS-2530 BS-2640 BS-2860



Wall mount speaker, designed in plastic material, 4 inch, 5 inch, 6 inch, 8 inch woofer and 1 inch tweeter speaker, rated power 20W, 30W, 40W and 60 Watts, use for commercial audio system or public address system (pa system) of input voltage 100 volt or power switch to 1/2, 1/4 power and 8Ω . Fast installation with strong mounting bracket. It is durable and practical and very competitive to satisfy sound system at economical budget.

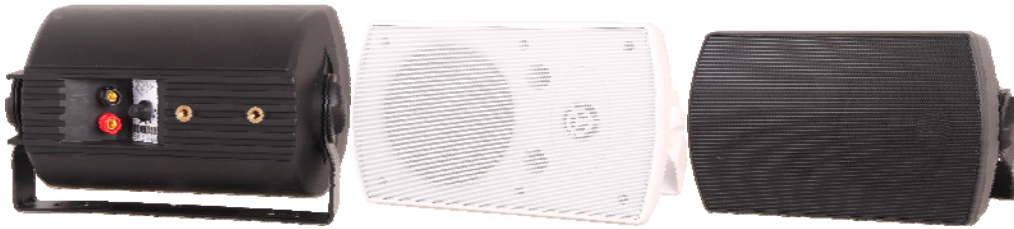
Features

- 2-way 4"+1" (BS-2420) / 5"+1" speaker (BS-2530) / 6"+1" speaker (BS-2640) / 8"+1" speaker (BS-2860);
- Rated power 20 Watts (BS-2420), 30 Watts (BS-2530), 40 Watts (BS-2640) , 60 Watts (BS-2860);
- Input voltage 100 Volt and power tabs of 1/2, 1/4 power or 8Ω;
- Sensitivity 86dB (BS-2420) / 87dB (BS-2530) / 88dB (BS-2640) / 89dB (BS-2860);
- Frequency Response 100~20KHz (BS-2420) / 90~20KHz (BS-2530) / 80~20KHz (BS-2640) / 70~20KHz (BS-2860)
- Wall mount speaker, strong mounting bracket;
- ABS material body, black or white color for option;
- Dimension 220x150x135mm (BS-2420) / 255x178x155mm (BS-2530) / 310x213x195mm (BS-2640) / 417x289x255mm (BS-2860)

Specification

Model No.	BS-2420	BS-2530	BS-2640	BS-2860
Rated Power & Power Tabs	20W/10W/5W/8Ω	30W/15W/7.5W/8Ω	40W/20W/10W/8Ω	60W/30W/15W/8Ω
Speaker	4"woofer+1"tweeter	5"woofer+1"tweeter	6"woofer+1"tweeter	8"woofer+1"tweeter
Input Voltage	100V Line / 8Ω			
Sensitivity	86 dB	87 dB	88 dB	89 dB
Frequency Response	100-20KHz	90-20KHz	80-20KHz	70-20KHz
Mounting Method	Wall mounting bracket			
Color	Black / White			
Dimension	220x150x135mm	255x178x155mm	310x213x195mm	417x289x255mm
Weight	2.2 kg	3.2 kg	3.8 kg	6.8 kg

Wall mount Speaker BS-3430 BS-3540 BS-3650



Wall mount speaker, designed in ABS material, 4 inch, 5 inch, 6 inch woofer and 1 inch tweeter speaker, rated power 30W, 40W and 50 Watts, use for commercial audio system or public address system (pa system) of input voltage 100 volt or power switch to 1/2, 1/4 power and 8Ω . Fast installation with strong mounting bracket. It is durable and practical and very competitive to satisfy medium or high sound system.

Features

- 4"+1" (BS-3430) / 5"+1" speaker (BS-3540) / 6"+1" speaker (BS-3650);
- Rated power 30 Watts (BS-3430), 40 Watts (BS-3540), 50 Watts (BS-3650);
- Input voltage 100 Volt and power tabs of 1/2, 1/4 power or 8Ω;
- Sensitivity 87dB (BS-3430) / 88dB (BS-3540) / 89dB (BS-3650);
- Frequency Response 80~20KHz (BS-3430) / 70~20KHz (BS-3540) / 60~20KHz (BS-3650)
- Wall mount speaker, strong mounting bracket;
- ABS material body, black or white color for option
- Dimension 241x144x157mm (BS-3430) / 273x164x170mm (BS-3540) / 335x184x187mm (BS-3650)

Specification

Model No.	BS-3430	BS-3540	BS-3650
Rated Power & Power Tabs	30W/15W/7.5W/8Ω	40W/20W/10W/8Ω	50W/25W/12.5W/8Ω
Speaker	4"woofer +1" tweeter	5"woofer +1" tweeter	6"woofer +1" tweeter
Input Voltage	100V Line / 8Ω		
Sensitivity	87 dB	88 dB	89 dB
Frequency Response	80-20KHz	70-20KHz	60-20KHz
Mounting Method	Wall mounting bracket		
Color	Black / White		
Dimension	241x144x157mm	273x164x170mm	335x184x187mm
Weight	2.8 kg	3.2 kg	4.1 kg

Wall mount Speaker BS-4420 BS-4530 BS-4640



Wall mount speaker, designed in ABS material, 2-way 4 inch, 5 inch, 6 inch woofer and 1 inch tweeter speaker, rated power 20W, 30W and 40 Watts, use for commercial audio system or public address system (pa system) of input voltage 100 volt or power switch to 1/2, 1/4 power and 8Ω . Fast installation with strong mounting bracket. It is durable and practical and very competitive to satisfy medium or high level sound system.

Features

- 2 way 4"+1" (BS-4420) / 5"+1" speaker (BS-4530) / 6"+1" speaker (BS-4640);
- Rated power 20 Watts (BS-4420), 30 Watts (BS-4530), 40 Watts (BS-4640);
- Input voltage 100 Volt and power tabs of 1/2, 1/4 power or 8Ω;
- Sensitivity 87dB (BS-4420) / 88dB (BS-4530) / 89dB (BS-4640);
- Frequency Response 100~20KHz (BS-4420) / 90~20KHz (BS-4530) / 80~20KHz (BS-4640)
- Wall mount speaker, strong mounting bracket;
- ABS material body, black or white color for option
- Dimension 220x150x135mm (BS-4420) / 255x178x155mm (BS-4530) / 310x213x195mm (BS-4640)

Specification

Model No.	BS-4420	BS-4530	BS-4640
Rated Power & Power Tabs	20W/10W/5W/8Ω	30W/15W/7.5W/8Ω	40W/20W/10W/8Ω
Speaker	4"woofer +1" tweeter	5"woofer +1" tweeter	6"woofer +1" tweeter
Input Voltage	100V Line / 8Ω		
Sensitivity	87 dB	88 dB	89 dB
Frequency Response	100-20KHz	90-20KHz	80-20KHz
Mounting Method	Wall mounting bracket		
Color	Black / White		
Dimension	220x150x135mm	255x178x155mm	310x213x195mm
Weight	2.2 kg	3.2 kg	3.8 kg

Active Wall Mount Speaker BS-1500A BS-1600A



Active wall mount speaker, designed in ABS body, with a 2-way 5 inch/ 6 inch speaker, built-in amplifier rated power 25/35 Watts @ 8Ω, use for home audio system or public address system (pa system). Fast installation wall mounting bracket and angle adjustable. Treble, bass and master volume control, balance phoenix / RCA and 3.5mm input. The speaker also can be used for home audio system. It is durable and practical and very competitive to satisfy medium or high level sound system.

Features

2-way 5" woofer + 1" tweeter / 6" woofer + 1" tweeter speaker;

Active speaker with built-in amplifier rated power 25/35 Watts, max power 40/50 Watts;

Balanced phoenix input, RCA audio input, sound and tone volume adjustable;

Sensitivity 94±3 dB, 95±3 dB;

Frequency Response 80~18KHz/70~18KHz;

Adjustable wall mount speaker with wall mounting parts;

Strong ABS material body;

Dimension 185x170x250mm/215x200x295mm;

Weight:4.8kg/pair, 10.5kg/pair

Specification

Model No.	BS-1500A	BS-1600A
Rated Power / Max Power	25W / 40W	35W / 50W
Speaker	2 way 5" + 1" speaker	2 way 6" + 1" speaker
Power Supply	AC 220~240V	
Sensitivity	94±3dB	95±3dB
Frequency Response	80-18KHz	70-18KHz
Mounting Method	Onwall mounting speaker	
Colour	Black / White	
Dimension	185 x 170 x 250 mm	215 x 200 x 295 mm
Weight	4.8 kg / pair	10.5 kg / pair

Wall mount Speaker BS-5530 BS-5640



Wall mount speaker, designed in ABS material, 2-way 5 inch, 6.5 inch woofer and 1 inch tweeter speaker, rated power 30W and 40 Watts, use for home audio system or public address system (pa system) of input voltage 100 volt or 8Ω . Fast installation with strong mounting bracket. It is durable and practical and very competitive to satisfy medium or high level sound system.

Features

- 2 way 5"+1/2" (BS-5530) / 6.5"+1" speaker (BS-5640);
- Rated power 30 Watts (BS-5530), 40 Watts (BS-5640);
- Input voltage 100 Volt or 8Ω;
- Sensitivity 86dB (BS-5530) / 88dB (BS-5640);
- Frequency Response 90~20KHz (BS-5530) / 80~20KHz (BS-5640)
- Wall mount speaker, strong mounting bracket;
- ABS material body, black or white color for option
- Dimension 155x170x263mm (BS-5530) / 208x198x345mm (BS-5640)

Specification

Model No.	BS-5530	BS-5640
Rated Power	30W	40W
Speaker	5"woofer +1/2" tweeter	6.5"woofer +1" tweeter
Input Voltage	100V Line / 8Ω	
Sensitivity	86 dB	88 dB
Frequency Response	90-20KHz	80-20KHz
Mounting Method	Wall mounting bracket	
Color	Black / White	
Dimension	155x170x263mm	208x198x345mm
Weight	2.5 kg	3.2 kg

Wall Mount Speaker / Array Speaker BS-240



Engineering wall mount speaker, designed in ABS body, with dual 4 inch woofer and 1 inch tweeter, rated power 40 Watts, use for commercial audio system or public address system (pa system) of input voltage 100 volt and power tabs at 1/2, 1/4 power or 4Ω. Fast installation wall mounting bracket and angle adjustable. The speaker also can be combined into array speaker. Black and white color for option. It is durable and practical and very competitive to satisfy medium or high level architecture sound system.

Features

Dual 4" woofer and 1" tweeter;

Rated power 40 Watts, max power 60 Watts;

Input voltage 100 Volt, power tabs at 1/2, 1/4 power or 4Ω;

Sensitivity 86±3 dB;

Frequency Response 90~18KHz

Wall mount speaker with strong bracket;

Strong ABS material body;

Combinable array speaker;

Dimension 340x147x135mm

Weight:3.2kg

Specification

Model No.	BS-240
Rated Power / Max Power	40W / 60W
Speaker	4" woofer x 2 + 1" tweeter
Input Voltage	100V Line and power tabs at 1/2, 1/4 power or 4Ω
Sensitivity	86±3dB
Frequency Response	90-18KHz
Mounting Method	Onwall mounting speaker
Colour	Black / White
Dimension	340 x 147 x 135 mm
Weight	3.2 kg

Wall Mount Speaker BS-243



Wall mount speaker, designed in fashion ABS body, with dual 4 inch woofer and 1 inch tweeter, rated power 30 Watts, use for home audio or commercial audio system of input voltage 100 volt or 8Ω. Fast installation wall mounting bracket and angle adjustable. Black and white color for option. It is durable and practical and very competitive to satisfy medium or high level architecture sound system.

Features

Dual 4" woofer and 1" tweeter;

Rated power 30 Watts, max power 50 Watts;

Input voltage 8Ω or 100 Volt;

Sensitivity 86±3 dB;

Frequency Response 80~20KHz

Wall mount speaker with strong bracket;

Strong ABS material body;

Dimension 310x145x180mm

Specification

Model No.	BS-243
Rated Power / Max Power	30W / 50W
Speaker	4" woofer x 2 + 1" tweeter
Input Voltage	8Ω or 100V Line
Sensitivity	86±3dB
Frequency Response	80-20KHz
Mounting Method	Onwall mounting speaker
Colour	Black / White
Dimension	310 x 145 x 180 mm
Weight	2.6 kg

Wall Mount Speaker BS-420



Wall mount speaker, designed in fashion ABS body, with a 4 inch woofer and 1 inch tweeter, rated power 20 Watts, use for home audio or commercial audio system of input voltage 100 volt or 8Ω. Fast installation wall mounting bracket and angle adjustable. Black and white color for option. It is durable and practical and very competitive to satisfy medium or high level architecture sound system.

Features

- One 4" woofer and 1" tweeter;
- Rated power 20 Watts, max power 40 Watts;
- Input voltage 8Ω or 100 Volt;
- Sensitivity 86±3 dB;
- Frequency Response 85~18KHz
- Wall mount speaker with strong bracket;
- Strong ABS material body, and black or white color for option;
- Dimension 139x120x210mm

Specification

Model No.	BS-420
Rated Power / Max Power	20W / 40W
Speaker	4" woofer + 1" tweeter
Input Voltage	8Ω or 100V Line
Sensitivity	86±3dB
Frequency Response	85-18KHz
Mounting Method	Onwall mounting speaker
Colour	Black / White
Dimension	139 x 120 x 210 mm
Weight	1.2 kg

COMMERCIAL AUDIO SYSTEM
Wall Mount Speaker



BS-540

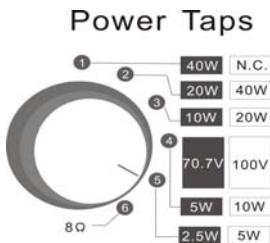
Shop / Office / Meeting room
Classroom / Church Applications

The wall mount speaker BS-540 is a 40W versatile commercial speaker, input Voltage at constant voltage or low impedance of 70V / 100V / 8Ω, and power tabs switch among 40W / 20W / 10W. The BS-540 is able to be installed horizontal or vertical on wall, different position can be set by the mounting bracket. Black or white color for option.



Features

- 70V, 100V, 8Ω switch;
- Power tabs at 40W, 20W, 10W;
- 5" woofer & 1" tweeter;
- Intallation horizontal or vertical;
- Black or white color for option



Specification

Model No.	BS-540
Power Tabs	40W / 20W / 10W / 5W
Input Voltage	70V / 100V / 8Ω
Sensitivity (1m/1w)	89 dB
Frequency Response	70~20KHz
Material & Finish	Plastic & Black/White
Dimension (mm)	310 x 213 x 195 mm
Weight (kg)	3.8 kg

Wall Mount Speaker BS-542



Wall mount speaker, designed in fashion ABS body, with a 5 inch woofer and dual 2 inch tweeters, rated power 40 Watts, use for home audio or commercial audio system of input voltage 100 volt or 8Ω. Fast installation wall mounting bracket and angle adjustable. Black and white color for option. It is durable and practical and very competitive to satisfy medium or high level architecture sound system.

Features

- 5" woofer and dual 2" tweeters;
- Rated power 40 Watts, max power 60 Watts;
- Input voltage 8Ω or 100 Volt;
- Sensitivity 88±3 dB;
- Frequency Response 80~18KHz
- Wall mount speaker with strong bracket;
- Strong ABS material body, and black or white color for option;
- Dimension 285x138x340mm

Specification

Model No.	BS-542
Rated Power / Max Power	40W / 60W
Speaker	5" woofer + dual 2" tweeters
Input Voltage	8Ω or 100V Line
Sensitivity	88±3dB
Frequency Response	80-18KHz
Mounting Method	Onwall mounting speaker
Colour	Black / White
Dimension	285 x 138 x 340 mm
Weight	3.8 kg

Wall Mount Speaker BS-610



Ultra thin 2-way wall mount speaker, designed in fashion ABS body, with a 6 inch woofer and 1 inch tweeters, rated power 10 Watts, use for public address system (pa system) or commercial audio system of input voltage 100 volt. Fast installation with screw mounting on wall. Black and white color for option. It is durable and practical and very competitive to satisfy medium or high level architecture sound system.

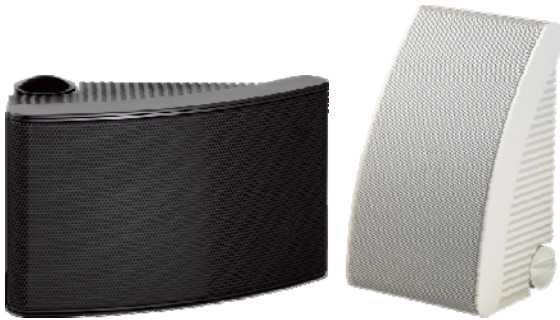
Features

- 6" woofer and 1" tweeters;
- Rated power 10 Watts, max power 20 Watts;
- Input voltage 100 Volt;
- Sensitivity 88 ± 3 dB;
- Frequency Response 150~18KHz
- Wall mount speaker with strong bracket;
- Strong ABS material body, and black or white color for option;
- Dimension 272x185x46mm

Specification

Model No.	BS-610
Rated Power & Power Tabs	10W / 5W
Speaker	6" woofer + 1" tweeters
Input Voltage	100V Line
Sensitivity	88 ± 3 dB
Frequency Response	150-18KHz
Mounting Method	Onwall mounting speaker
Colour	Black / White
Dimension	272 x 185 x 46 mm
Weight	1.1 kg

Wall mount Speaker BS-6530 BS-6640



Wall mount speaker, designed in ABS material, 2-way 5.25 inch, 7 inch woofer and 1 inch tweeter speaker, rated power 30W and 40 Watts, use for home audio system or public address system (pa system) of input voltage 100 volt or 8Ω . Fast installation with strong mounting bracket. It is durable and practical and very competitive to satisfy medium or high level sound system.

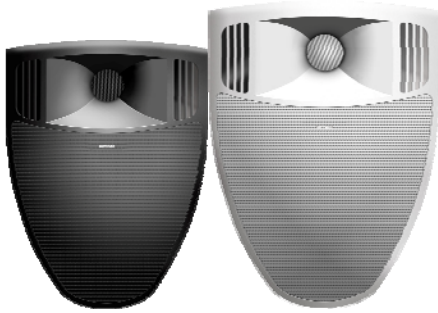
Features

- 2 way 5.25"+4/5" (BS-6530) / 7"+1" speaker (BS-6640);
- Rated power 30 Watts (BS-6530), 40 Watts (BS-6640);
- Input voltage 100 Volt or 8Ω;
- Sensitivity 86dB (BS-6530) / 88dB (BS-6640);
- Frequency Response 90~20KHz (BS-6530) / 80~20KHz (BS-6640)
- Wall mount speaker, strong mounting bracket;
- ABS material body, black or white color for option
- Dimension 170x136x273mm (BS-6530) / 206x170x341mm (BS-6640)

Specification

Model No.	BS-6530	BS-6640
Rated Power	30W	40W
Speaker	5.25"woofer +4/5" tweeter	7"woofer +1" tweeter
Input Voltage	100V Line or 8Ω	
Sensitivity	86 dB	88 dB
Frequency Response	90-20KHz	80-20KHz
Mounting Method	Wall mounting bracket	
Color	Black / White	
Dimension	170x136x273mm	206x170x341mm
Weight	1.9 kg	2.6 kg

Wall Mount / Corner Mount Speaker BS-7320 BS-7530



Wall mount speaker, designed in ABS material, 2-way 3.5 inch, 5 inch woofer and 1 inch tweeter speaker, rated power 20W and 30 Watts, use for home audio system or public address system (pa system) of input voltage 100 volt or power tabs 1/2, 1/4 power and 8Ω. Fast installation with strong mounting bracket. The speaker also can be combined into array speaker. Black and white color for option. It is durable and practical and very competitive to satisfy medium or high level architecture sound system.

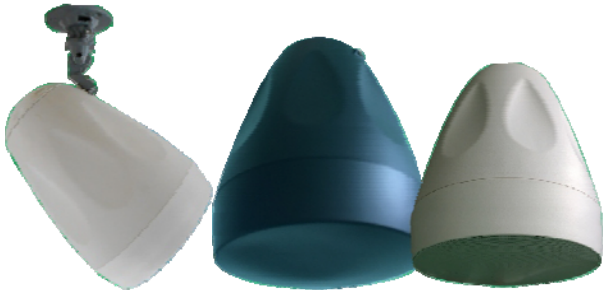
Features

- 2 way 3.5"+1" (BS-7320) / 5"+1" speaker (BS-7530);
- Rated power 20 Watts (BS-7320), 30 Watts (BS-7530);
- Input voltage 100 Volt and power tabs of 1/2, 1/4 power or 8Ω;
- Sensitivity 88dB (BS-7320) / 90dB (BS-7530);
- Frequency Response 120~20KHz (BS-7320) / 100~20KHz (BS-7530)
- Wall mount speaker, strong mounting bracket;
- Combinable for different directional speaker;
- ABS material body, black or white color for option
- Dimension 190x155x265mm (BS-7320) / 230x175x310mm (BS-7530)

Specification

Model No.	BS-7320	BS-7530
Rated Power & Power Tabs	20W/10W/5W/8Ω	30W/15W/7.5W/8Ω
Speaker	3.5"woofer +1" tweeter	5"woofer +1" tweeter
Input Voltage	100V Line or 8Ω	
Sensitivity	88 dB	90 dB
Frequency Response	120-20KHz	100-20KHz
Mounting Method	Wall mounting bracket	
Color	Black / White	
Dimension	190x155x265mm	230x175x310mm
Weight	1.6 kg	2.2 kg

Wall mount Speaker BS-743 BS-754 BS-765



Verstile wall mount speaker, designed in ABS material, 2 way 4 inch, 5 inch, 6 inch speaker driver, rated power 30W, 40W and 50 Watts, use for commercial audio system or public address system (pa system) of input voltage 100 volt or power connect to 8Ω . Fast installation with strong mounting bracket. It is durable and practical and very competitive to meet architechure sound system.

Features

4"+1" (BS-743) / 5"+1" speaker (BS-754) / 6"+1" speaker (BS-765);

Rated power 30 Watts (BS-743), 40 Watts (BS-754), 50 Watts (BS-765);

Input voltage 100 Volt and 8Ω;

Sensitivity 90dB (BS-743) / 91dB (BS-754) / 92dB (BS-765);

Frequency Response 135~20KHz (BS-743) / 130~20KHz (BS-754) / 110~20KHz (BS-765)

Wall mount speaker, or pendant mounting;

ABS material body, black or white color for option

Dimension 136x208mm (BS-743) / 155x260mm (BS-754) / 208x300mm (BS-765)

Specification

Model No.	BS-743	BS-754	BS-765
Rated Power & Power Tabs	30W/15W/7.5W/8Ω	40W/20W/10W/8Ω	50W/25W/12.5W/8Ω
Speaker	4"woofer +1" tweeter	5"woofer +1" tweeter	6"woofer +1" tweeter
Input Voltage	100V Line / 8Ω		
Sensitivity	90 dB	91 dB	92 dB
Frequency Response	135-20KHz	130-20KHz	110-20KHz
Mounting Method	Hanging strip or wall mounting bracket		
Color	Black / White		
Dimension	136x208mm	155x260mm	208x300mm
Weight	1.8 kg	2.2 kg	3.5 kg

Wall Mount Speaker BS-8410



Wall mount speaker, made of arc design plastic body, with 2-way 4 inch woofer and 1 inch tweeter, rated power 10-15 Watts, use for conference, commercial audio system or public address system (pa system) of input voltage 100 volt. Fast installation screws on wall. It is delivers clear sound and practical use at very competitive cost to satisfy medium or high level conference or commercial sound system.

Features

4" woofer and 1" tweeter;

Rated power 10 Watts, max power 20 Watts;

Input voltage 100 Volt;

Sensitivity 96 ± 3 dB;

Frequency Response 100~18KHz

Mounting speaker on wall with screws;

High quality plastic body;

Dimension 170x260x120mm

Weight:1.5kg

Specification

Model No.	BS-8410
Rated Power / Max Power	10W / 20W
Speaker	4" woofer + 1" tweeter
Input Voltage	100V Line
Sensitivity	96 ± 3 dB
Frequency Response	100-18KHz
Mounting Method	Onwall mounting speaker
Colour	Black & White
Dimension	170 x 260 x 120 mm
Weight	1.5 kg

Wall Mount Speaker BS-8412



Wall mount speaker, made of ABS body and arc design metal grill, with 2-way 4 inch woofer and 1 inch tweeter, rated power 12-15 Watts, use for conference, commercial audio system or public address system (pa system) of input voltage 100 volt. Fast installation with screws on wall. It is delivers clear sound and practical use at very competitive cost to satisfy medium or high level conference or commercial sound system.

Features

4" woofer and 1" tweeter;

Rated power 12 Watts, max power 25 Watts;

Input voltage 100 Volt;

Sensitivity 86 ± 3 dB;

Frequency Response 100~18KHz

Mounting speaker on wall with screws;

High quality plastic body;

Dimension 165x268x80mm

Weight:1.5kg

Specification

Model No.	BS-8412
Rated Power / Max Power	12W / 25W
Speaker	4" woofer + 1" tweeter
Input Voltage	100V Line
Sensitivity	86 ± 3 dB
Frequency Response	100-18KHz
Mounting Method	Onwall mounting speaker
Colour	Black & White
Dimension	165 x 268 x 80 mm
Weight	1.5 kg

Wall Mount Speaker BS-8412BT



Active Bluetooth wall mount speaker, made of ABS body and arc design metal grill, with 2-way 4 inch woofer and 1 inch tweeter, rated power 12-15 Watts, use for small rooms or hotel rooms. Fast installation with screws on wall. It is delivers clear sound and practical use at very competitive cost to satisfy medium or high level sound system.

Features

4" woofer and 1" tweeter;

Rated power 12 Watts, max power 25 Watts;

Input voltage 100 Volt;

Sensitivity 86 ± 3 dB;

Frequency Response 100~18KHz

Mounting speaker on wall with screws;

High quality plastic body;

Dimension 165x268x80mm

Weight:1.5kg

Specification

Model No.	BS-8412BT
Rated Power / Max Power	12W / 25W (Built-in amplifier)
Speaker	4" woofer + 1" tweeter
Power Supply	220V 50/60Hz
Audio Source	Bluetooth (10-15 meters)
Sensitivity	86 ± 3 dB
Frequency Response	100-18KHz
Mounting Method	Onwall mounting speaker
Colour	Black & White
Dimension	165 x 268 x 80 mm
Weight	2.2 kg

Wall Mount Speaker BS-8415



Wall mount speaker, made of wooden body, with 2-way 4 inch woofer and 1 inch tweeter, rated power 20 Watts, use for conference, commercial audio system or public address system (pa system) of input voltage 100 volt or 8Ω. Fast installation screws on wall. It is delivers clear sound and practical use at very competitive cost to satisfy medium or high level conference or commercial sound system.

Features

- 4" woofer and 1" tweeter;
- Rated power 20 Watts, max power 40 Watts;
- Input voltage 100 Volt or 8Ω;
- Sensitivity 88±3 dB;
- Frequency Response 60~20KHz
- Mounting speaker on wall with screws;
- High quality wooden body;
- Dimension 310x205x120mm
- Weight:2.2kg

Specification

Model No.	BS-8415
Rated Power / Max Power	20W / 40W
Speaker	4" woofer + 1" tweeter
Input Voltage	100V Line or 8Ω
Sensitivity	88±3dB
Frequency Response	60-20KHz
Mounting Method	Onwall mounting speaker
Colour	Dark Brown
Dimension	310 x 205 x 120 mm
Weight	2.2 kg