

## Bluetooth Ceiling Speaker HC-B530Z



HC-B530Z is a frameless ceiling speaker with bluetooth receiver.

### **Features**

30W power;

Built-in Bluetooth receiver;

Frameless design

### **Specification**

Model No.	HC-B530Z
Speaker	2 way speaker 5.25" PP +1" silk tweeter
Power	30W
Frequency Response	100Hz~20KHz
Sensitivity	>86 dB
Size	D 214 x 88.9 mm

## Ceiling Speaker CS-150 CS-160 CS-180



Economic flush mount ceiling speaker, designed in plastic frame and body, with full range 5 inch, 6 inch and 8 inch speaker, rated power 6-10 Watts, use for commercial audio system or public address system (pa system) of input voltage 100 volt. Fast installation with 2 spring clips. It is durable and practical and very competitive to satisfy small or medium sound system at low budget.

### Features

Full range 5" (CS-150) / 6" speaker (CS-160) / 8" speaker (CS-180);

Rated power 6 Watts, max power 15 Watts;

Input voltage 100 Volt;

Sensitivity 83dB (CS-150) / 85dB (CS-160) / 88dB (CS-180);

Frequency Response 85~18KHz (CS-150) / 80~18KHz (CS-160) / 80~18KHz (CS-180)

Ceiling mount speaker, spring clip mounting;

ABS material body

Cutout size 150mm (CS-150) / 168mm (CS-160) / 200mm (CS-180)

Dimension 180 x 60mm (CS-150) / 200 x 60mm (CS-160) / 245 x 69mm (CS-180)

### Specification

Model No.	CS-150	CS-160	CS-180
Rated Power / Max Power	6W / 10W	6W / 10W	10W / 15W
Speaker	Full range 5" speaker	Full range 6" speaker	Full range 8" speaker
Input Voltage	100V Line		
Sensitivity	83 dB	85 dB	88 dB
Frequency Response	120-15KHz	105-16KHz	100-16KHz
Mounting Method	Spring Clip		
Cutout Size	150 mm	168 mm	200 mm
Dimension	175 x 75 mm	188 x 80 mm	230 x 90 mm

## Ceiling Speaker CS-104 CS-105



Economic flush mount ceiling speaker, designed in metal frame and body, with full range 4 inch and 5 inch speaker, rated power 6-10 Watts, use for commercial audio system or public address system (pa system) of input voltage 100 volt. Fast installation with 3 spring clips. It is durable and practical and very competitive to satisfy small or medium sound system at low budget.

### Features

- Full range 4" (CS-104) / 5" speaker (CS-105);
- Rated power 6 Watts, max power 10 Watts;
- Input voltage 100 Volt;
- Sensitivity 86dB (CS-104) / 87dB (CS-105);
- Frequency Response 85~18KHz (CS-104) / 80~18KHz (CS-105)
- Ceiling mount speaker, spring clip mounting;
- Metal material body
- Cutout size 150mm (CS-104) / 166mm (CS-105)
- Dimension 180 x 60mm (CS-104) / 200 x 60mm (CS-105)

### Specification

Model No.	CS-104	CS-105
Rated Power / Max Power	6W / 10W	6W / 10W
Speaker	Full range 4" speaker	Full range 5" speaker
Input Voltage	100V Line	
Sensitivity	86 dB	87 dB
Frequency Response	85-18KHz	80-18KHz
Mounting Method	Spring Clip	
Cutout Size	150 mm	166 mm
Dimension	180 x 60 mm	200 x 60 mm

## Ceiling Speaker CS-114 CS-115



Economic flush mount ceiling speaker, designed in metal frame and body, with coaxial 4 inch and 5 inch speaker, rated power 6-10 Watts, use for commercial audio system or public address system (pa system) of input voltage 100 volt. Fast installation with 3 spring clips. It is durable and practical and very competitive to satisfy small or medium sound system at low budget.

### **Features**

coaxial 4" (CS-114) / 5" speaker (CS-115);

Rated power 6 Watts, max power 10 Watts;

Input voltage 100 Volt;

Sensitivity 86dB (CS-114) / 87dB (CS-115);

Frequency Response 85~18KHz (CS-114) / 80~18KHz (CS-115)

Ceiling mount speaker, spring clip mounting;

Metal material body

Cutout size 150mm (CS-114) / 166mm (CS-115)

Dimension 180 x 60mm (CS-114) / 200 x 60mm (CS-115)

### **Specification**

Model No.	CS-114	CS-115
Rated Power / Max Power	6W / 10W	6W / 10W
Speaker	Full range 4" speaker	Full range 5" speaker
Input Voltage	100V Line	
Sensitivity	86 dB	87 dB
Frequency Response	85-18KHz	80-18KHz
Mounting Method	Spring Clip	
Cutout Size	150 mm	166 mm
Dimension	180 x 60 mm	200 x 60 mm

## Ceiling Speaker CS-104D CS-105D CS-106D



Economic flush mount ceiling speaker, designed in metal frame and body, with full range 4 inch, 5 inch and 6 inch speaker, rated power 6-10 Watts, use for commercial audio system or public address system (pa system) of input voltage 100 volt. Fast installation with 3 spring clips. It is durable and practical and very competitive to satisfy small or medium sound system at low budget.

### Features

Full range 4" (CS-104D) / 5" speaker (CS-105D) / 6" speaker (CS-106D);

Rated power 6 Watts, max power 10 Watts;

Input voltage 100 Volt;

Sensitivity 86dB (CS-104D) / 87dB (CS-105D) / 88dB (CS-106D);

Frequency Response 85~18KHz (CS-104D) / 80~18KHz (CS-105D) / 80~18KHz (CS-106D)

Ceiling mount speaker, spring clip mounting;

Metal material body and metal back enclosure;

Cutout size 150mm (CS-104D) / 166mm (CS-105D) / 220mm (CS-106D)

Dimension 180 x 60mm (CS-104D) / 200 x 60mm (CS-105D) / 245 x 69mm (CS-106D)

### Specification

Model No.	CS-104D	CS-105D	CS-106D
Rated Power / Max Power	6W / 10W	6W / 10W	6W / 10W
Speaker	Full range 4" speaker	Full range 5" speaker	Full range 6" speaker
Input Voltage	100V Line		
Sensitivity	86 dB	87 dB	88 dB
Frequency Response	85-18KHz	80-18KHz	80-18KHz
Mounting Method	Spring Clip		
Cutout Size	155 mm	170 mm	225 mm
Dimension	180 x 110 mm	200 x 105 mm	245 x 115 mm

## Small Ceiling Speaker CS-28



CS-28 is a modern design ceiling speaker in small size, 2.5" speaker and 6-8W power of sound allow it gives pleasant background music for commercial audio or public address. Spring clips make it easy mount to ceiling. Size D101xH60mm.

### **Specification**

Model No.	CS-28
Speaker	2.5" speaker
Power	6-8W
Input Voltage	100V
Sensitivity (1m/1w)	86 dB
Frequency Response	120~20KHz
Material & Finish	Metal / White
Cutout Size (mm)	90 mm
Weight (kg)	0.6

## Small Ceiling Speaker CS-30

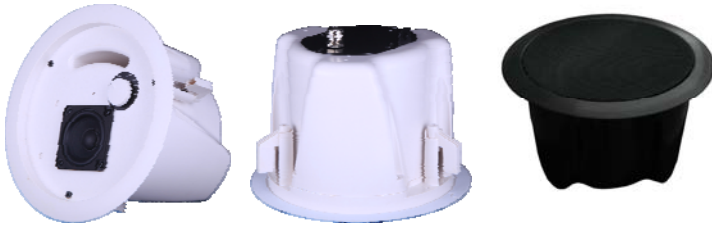


CS-30 is a modern design ceiling speaker in small downlight looking, full range 2.5" speaker and 6-8W power of sound allow it gives pleasant background music for commercial audio or public address. Spring clips make it easy mount to ceiling. Size D103xH80mm.

### Specification

Model No.	CS-30
Speaker	2.5" speaker
Power	6-8W
Input Voltage	100V
Sensitivity (1m/1w)	86 dB
Frequency Response	120~20KHz
Material & Finish	Plastic / White
Cutout Size (mm)	95 mm
Weight (kg)	0.6

## Ceiling Speaker CS-200



CS-200 is a special design ceiling speaker for middle or higher level commercial audio application, 2.5" speaker handles 20W power of sound, ensures middle and low frequency gives clear, wide and broad performance. The power is adjustable to 1/2, 1/4 tabs, line voltage of 70V, 100V and 8Ω. Two colors available, black and white for option. It is able gives pleasant background music for commercial audio or public address for shopping mall, meeting room, conference sound system, classroom etc.. 4 dog ear clips make it easy mounting. Size D240xH160mm.

### Specification

Model No.	CS-200
Speaker	2.5" speaker
Power	20W / 10W / 5W Tabs
Input Voltage	70V/100V/8Ω
Sensitivity (1m/1w)	88 dB
Frequency Response	85~18KHz
Material & Finish	Plastic / Black & White
Cutout Size (mm)	205 mm
Weight (kg)	3.8 kg



## Ceiling Speaker CS-300



CS-300 is a special design ceiling speaker for middle or higher level commercial audio application, 3 pieces 2.5" speaker drivers and 1 piece 1" tweeter handle 20W power of sound, ensures middle and low frequency gives clear, wide and broad performance. The power is adjustable to 1/2, line voltage of 70V, 100V (or 8Ω). Two colors available, black and white for option. It is able gives pleasant background music for commercial audio or public address for shopping mall, meeting room, conference sound system, classroom etc. 4 dog ear clips make it easy mounting. Size D260xH172mm.

### Features

- 2.5" speaker driver x 3 pieces + 1" tweeter;
- Rated power 20 Watts, max power 40 Watts;
- Input voltage 70/100 Volt (or 8 ohm);
- Sensitivity 92dB;
- Frequency Response 90~18KHz;
- Ceiling mount speaker, dog-ear clamp mounting;
- ABS material body
- Cutout size 232mm;
- Dimension 260 x 172mm

### Specification

Model No.	CS-300
Speaker	2.5" speaker driver x 3 & 1" tweeter
Power	20W / 10W Tabs
Input Voltage	70V/100V (or 8Ω)
Sensitivity (1m/1w)	92 dB
Frequency Response	90~18KHz
Material & Finish	Plastic / Black & White
Cutout Size (mm)	232 mm
Weight (kg)	4 kg

## Ceiling Speaker CS-252 CS-263 CS-284



Ceiling mount speaker, designed in ABS material, with coaxial 5 inch, 6 inch and 8 inch speaker, rated power 20W, 30W and 40 Watts, use for commercial audio system or public address system (pa system) of input voltage 100 volt. Fast installation with 4 dog ear clamp. It is durable and practical and very competitive to satisfy sound system at economical budget.

### Features

Coaxial 5" (CS-252) / 6" speaker (CS-263) / 8" speaker (CS-284);

Rated power 20 Watts (CS-252), 30 Watts (CS-263), 40 Watts (CS-284);

Input voltage 100 Volt;

Sensitivity 86dB (CS-252) / 87dB (CS-263) / 88dB (CS-284);

Frequency Response 95~20KHz (CS-252) / 90~20KHz (CS-263) / 85~20KHz (CS-284)

Ceiling mount speaker, dog ear clamp mounting;

ABS material body

Cutout size 170mm (CS-252) / 200mm (CS-263) / 240mm (CS-284)

Dimension 203 x 80mm (CS-252) / 230 x 90mm (CS-263) / 270 x 105mm (CS-284)

### Specification

Model No.	CS-252	CS-263	CS-284
Rated Power / Max Power	20W / 30W	30W / 45W	40W / 60W
Speaker	Coaxial 5" speaker	Coaxial 6" speaker	Coaxial 8" speaker
Input Voltage	100V Line		
Sensitivity	88 dB	89 dB	90 dB
Frequency Response	95-20KHz	85-20KHz	60-20KHz
Mounting Method	Dog ear clamp		
Cutout Size	170 mm	200 mm	240 mm
Dimension	203 x 80 mm	230 x 90 mm	270 x 105 mm

## Ceiling Speaker CS-252H CS-263H CS-284H



Ceiling mount speaker, designed in ABS body with back enclosure (fire dome), with coaxial 5 inch, 6 inch and 8 inch speaker, rated power 20W, 30W and 40 Watts, use for commercial audio system or public address system (pa system) of input voltage 100 volt. Fast installation with 4 dog ear clamp. It is durable and practical and very competitive to satisfy sound system at economical budget.

### Features

5" (CS-252H) / 6" speaker (CS-263H) / 8" coaxial speaker (CS-284H);

Rated power 20 Watts (CS-252H), 30 Watts (CS-263H), 40 Watts (CS-284H);

Input voltage 100 Volt;

Sensitivity 88dB (CS-252H) / 89dB (CS-263H) / 90dB (CS-284H);

Frequency Response 90~20KHz (CS-252H) / 85~20KHz (CS-263H) / 80~20KHz (CS-284H)

Ceiling mount speaker, dog ear clamp mounting;

ABS material body with metal fire dome;

Cutout size 170mm (CS-252H) / 200mm (CS-263H) / 240mm (CS-284H)

Dimension 213 x 130mm (CS-252H) / 240 x 155mm (CS-263H) / 280 x 190mm (CS-284H)

### Specification

Model No.	CS-252H	CS-263H	CS-284H
Rated Power / Max Power	20W / 30W	30W / 45W	40W / 60W
Speaker	Coaxial 5" speaker	Coaxial 6" speaker	Coaxial 8" speaker
Input Voltage	100V Line		
Sensitivity	88 dB	89 dB	90 dB
Frequency Response	90-20KHz	85-20KHz	80-20KHz
Mounting Method	Dog ear clamp		
Cutout Size	170 mm	200 mm	240 mm
Dimension	213 x 130 mm	240 x 155 mm	280 x 190 mm

## Ceiling Speaker CS-252D CS-263D CS-284D



Ceiling mount speaker, designed in ABS body with back enclosure (fire dome), with coaxial 5 inch, 6 inch and 8 inch speaker, rated power 20W, 30W and 40 Watts, use for commercial audio system or public address system (pa system) of switchable input voltage 100 volt or 8 $\Omega$ , power tabs 1/2 and 1/4 . Fast installation with 4 dog ear clamp. It is durable and practical and very competitive to satisfy middle or high level sound system.

### Features

5" (CS-252D) / 6" speaker (CS-263D) / 8" coaxial speaker (CS-284D);

Rated power 20 Watts (CS-252D), 30 Watts (CS-263D), 40 Watts (CS-284D);

Input voltage 100 Volt / 8 $\Omega$ , with power tabs select at 1/2 power, 1/4 power;

Sensitivity 88dB (CS-252D) / 89dB (CS-263D) / 90dB (CS-284D);

Frequency Response 90~20KHz (CS-252D) / 85~20KHz (CS-263D) / 80~20KHz (CS-284D)

Ceiling mount speaker, dog ear clamp mounting;

ABS material body with metal fire dome;

Cutout size 170mm (CS-252D) / 200mm (CS-263D) / 240mm (CS-284D)

Dimension 203 x 145mm (CS-252D) / 230 x 150mm (CS-263D) / 270 x 185mm (CS-284D)

### Specification

Model No.	CS-252D	CS-263D	CS-284D
Rated Power / Max Power	20W / 30W	30W / 45W	40W / 60W
Speaker	Coaxial 5" speaker	Coaxial 6" speaker	Coaxial 8" speaker
Input Voltage & Power Tabs	5W/10W/20W@100V / 8 $\Omega$	7.5W/15W/30W@100V / 8 $\Omega$	10W/20W/40W@100V / 8 $\Omega$
Sensitivity	88 dB	89 dB	90 dB
Frequency Response	90-20KHz	85-20KHz	80-20KHz
Mounting Method	Dog ear clamp		
Cutout Size	170 mm	200 mm	240 mm
Dimension	203 x 145 mm	230 x 150 mm	270 x 185 mm

## Ceiling Speaker CS-242Z CS-253Z CS-264Z



Ceiling mount speaker, frameless designed in ABS material, with coaxial 4 inch, 5 inch and 6 inch speaker, rated power 20W, 30W and 40 Watts, use for commercial audio system or public address system (pa system) of input voltage 100 volt. Fast installation with 4 dog ear clamp. It is durable and practical and very competitive to satisfy sound system at economical budget.

### Features

Coaxial 4" (CS-242Z) / 5" speaker (CS-253Z) / 6" speaker (CS-264Z);

Rated power 20 Watts (CS-242Z), 30 Watts (CS-253Z), 40 Watts (CS-264Z);

Input voltage 100 Volt;

Sensitivity 86dB (CS-242Z) / 87dB (CS-253Z) / 88dB (CS-264Z);

Frequency Response 95~20KHz (CS-242Z) / 90~20KHz (CS-253Z) / 85~20KHz (CS-264Z)

Ceiling mount speaker, dog ear clamp mounting;

ABS material body

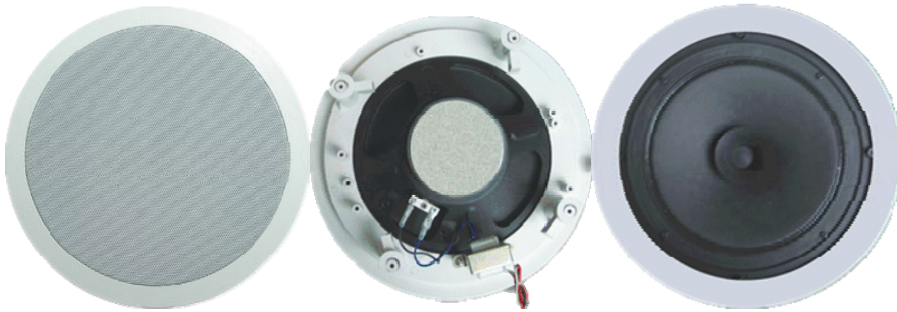
Cutout size 160mm (CS-242Z) / 180mm (CS-253Z) / 200mm (CS-264Z)

Dimension 180 x 80mm (CS-242Z) / 203 x 85mm (CS-253Z) / 232 x 90mm (CS-264Z)

### Specification

Model No.	CS-242Z	CS-253Z	CS-264Z
Rated Power / Max Power	20W / 30W	30W / 45W	40W / 60W
Speaker	Coaxial 4" speaker	Coaxial 5" speaker	Coaxial 6" speaker
Input Voltage	100V Line		
Sensitivity	88 dB	89 dB	90 dB
Frequency Response	95-20KHz	85-20KHz	60-20KHz
Mounting Method	Dog ear clamp		
Cutout Size	160 mm	180 mm	200 mm
Dimension	180 x 80 mm	203 x 85 mm	232 x 90 mm

## Ceiling Speaker CS-356 CS-366 CS-381



Ceiling mount speaker, designed in ABS material, with 5.25 inch, 6.5 inch and 8 inch full range speaker, rated power 6W to 10 Watts, use for commercial audio system or public address system (pa system) of input voltage 100 volt. Fast installation with 4 dog ear clamp. It is durable and practical and very competitive to satisfy sound system at economical budget.

### Features

Full range 5.25" (CS-356) / 6.5" speaker (CS-366) / 8" speaker (CS-381);

Rated power 6 Watts (CS-356), 8 Watts (CS-366), 10 Watts (CS-381);

Input voltage 100 Volt;

Sensitivity 88dB (CS-356) / 89dB (CS-366) / 90dB (CS-381);

Frequency Response 110~18KHz (CS-356) / 100~18KHz (CS-366) / 90~18KHz (CS-381)

Ceiling mount speaker, dog ear clamp mounting;

ABS material body

Cutout size 170mm (CS-356) / 200mm (CS-366) / 240mm (CS-381)

Dimension 203 x 70mm (CS-356) / 230 x 80mm (CS-366) / 270 x 90mm (CS-381)

### Specification

Model No.	CS-356	CS-366	CS-381
Rated Power / Max Power	6W / 10W	8W / 15W	10W / 18W
Speaker	Full range 5.25" speaker	Full range 6.5" speaker	Full range 8" speaker
Input Voltage	100V Line		
Sensitivity	88 dB	89 dB	90 dB
Frequency Response	110-18KHz	100-18KHz	90-18KHz
Mounting Method	Dog ear clamp		
Cutout Size	170 mm	200 mm	240 mm
Dimension	203 x 70 mm	230 x 80 mm	270 x 90 mm

## Ceiling Speaker CS-452 CS-463 CS-484



Ceiling mount speaker, designed in ABS material, with 5.25 inch, 6.5 inch and 8 inch coaxial speaker, rated power 20W to 40 Watts, use for commercial audio system or public address system (pa system) of input voltage 100 volt. Fast installation with 4 dog ear clamp. It is durable and practical and very competitive to satisfy sound system at economical budget.

### Features

coaxial 5.25" (CS-452) / 6.5" speaker (CS-463) / 8" speaker (CS-484);

Rated power 20 Watts (CS-452), 30 Watts (CS-463), 40 Watts (CS-484);

Input voltage 100 Volt;

Sensitivity 87dB (CS-452) / 88dB (CS-463) / 89dB (CS-484);

Frequency Response 95~20KHz (CS-452) / 85~18KHz (CS-463) / 50~18KHz (CS-484)

Ceiling mount speaker, dog ear clamp mounting;

ABS material body

Cutout size 170mm (CS-452) / 200mm (CS-463) / 240mm (CS-484)

Dimension 203 x 80mm (CS-452) / 230 x 90mm (CS-463) / 270 x 105mm (CS-484)

### Specification

Model No.	CS-452	CS-463	CS-484
Rated Power / Max Power	20W / 40W	30W / 60W	40W / 80W
Speaker	coaxial 5.25" speaker	coaxial 6.5" speaker	coaxial 8" speaker
Input Voltage	100V Line		
Sensitivity	87 dB	88 dB	89 dB
Frequency Response	95-20KHz	85-20KHz	50-18KHz
Mounting Method	Dog ear clamp		
Cutout Size	170 mm	200 mm	240 mm
Dimension	203 x 80 mm	230 x 90 mm	270 x 105 mm

## Ceiling Speaker CS-452D CS-463D CS-484D



Ceiling mount speaker, designed in ABS material, with 5.25 inch, 6.5 inch and 8 inch coaxial speaker, rated power 20W to 40 Watts, use for commercial audio system or public address system (pa system) of input voltage 100 volt. Fast installation with 4 dog ear clamp. It is durable and practical and very competitive to satisfy sound system at economical budget.

### **Features**

Coaxial 5.25" (CS-452D) / 6.5" speaker (CS-463D) / 8" speaker (CS-484D);

Rated power 20 Watts (CS-452D), 30 Watts (CS-463D), 40 Watts (CS-484D);

Input voltage 100 Volt and 8 ohm switch;

Sensitivity 87dB (CS-452D) / 88dB (CS-463D) / 89dB (CS-484D);

Frequency Response 95~20KHz (CS-452D) / 85~18KHz (CS-463D) / 50~18KHz (CS-484D)

Ceiling mount speaker, dog ear clamp mounting;

ABS material body

Cutout size 170mm (CS-452D) / 200mm (CS-463D) / 240mm (CS-484D)

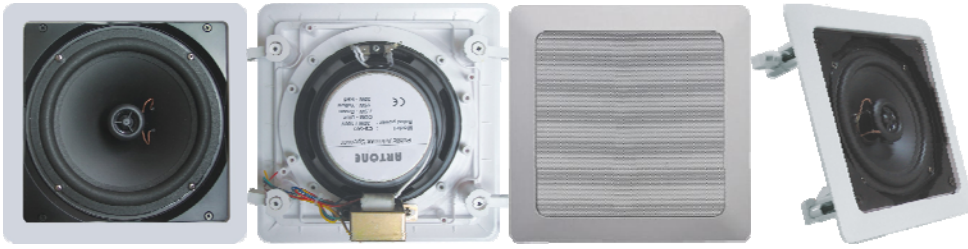
Dimension 203 x 150mm (CS-452D) / 230 x 155mm (CS-463D) / 270 x 190mm (CS-484D)

### **Specification**

Model No.	CS-452D	CS-463D	CS-484D
Rated Power / Max Power	20W / 40W	30W / 60W	40W / 80W
Speaker	Coaxial 5.25" speaker	Coaxial 6.5" speaker	Coaxial 8" speaker
Input Voltage	100V (power tabs 1/2, 1/4) / 8 ohm		
Sensitivity	87 dB	88 dB	89 dB
Frequency Response	95-20KHz	90-20KHz	85-20KHz
Mounting Method	Dog ear clamp		
Cutout Size	170 mm	200 mm	240 mm
Dimension	203 x 150 mm	230 x 155 mm	270 x 190 mm



## 220Ceiling Speaker CS-552 CS-563 CS-584



Ceiling mount speaker, designed in ABS body and square shape, with coaxial 5 inch, 6 inch and 8 inch speaker, rated power 20W, 30W and 40 Watts, used for commercial audio system or public address system (pa system) of input voltage 100 volt. Fast installation with 4 dog ear clamp. It is durable and practical and very competitive to satisfy middle or high level sound system.

### **Features**

5" (CS-552) / 6" speaker (CS-563) / 8" coaxial speaker (CS-584);

Rated power 20 Watts (CS-552), 30 Watts (CS-563), 40 Watts (CS-584);

Input voltage 100 Volt;

Sensitivity 88dB (CS-552) / 89dB (CS-563) / 90dB (CS-584);

Frequency Response 95~20KHz (CS-552) / 90~20KHz (CS-563) / 85~20KHz (CS-584)

Ceiling mount speaker, dog ear clamp mounting;

ABS material body;

Cutout size 148x148mm (CS-552) / 190x190mm (CS-563) / 225x225mm (CS-584)

Dimension 190x190x80mm (CS-552) / 220x220x95mm (CS-563) / 255x255x100mm (CS-584)

### **Specification**

Model No.	CS-552	CS-563	CS-584
Rated Power / Max Power	20W / 30W	30W / 45W	40W / 60W
Speaker	Coaxial 5" speaker	Coaxial 6" speaker	Coaxial 8" speaker
Input Voltage	100V Line		
Sensitivity	88 dB	89 dB	90 dB
Frequency Response	95-20KHz	90-20KHz	85-20KHz
Mounting Method	Dog ear clamp		
Cutout Size	148x148 mm	190x190 mm	225x225 mm
Dimension	190x190x80 mm	220x220x95 mm	255x255x100 mm

## Ceiling Speaker CS-552D CS-563D CS-584D



Ceiling mount speaker, designed in ABS square body with back enclosure (fire dome), with coaxial 5 inch, 6 inch and 8 inch speaker, rated power 20W, 30W and 40 Watts, use for commercial audio system or public address system (pa system) of siwtchable input voltage 100 volt or 8 $\Omega$ , power tabs 1/2 and 1/4 . Fast installation with 4 dog ear clamp. It is durable and practical and very competitive to satisfy middle or high level sound system.

### Features

5" (CS-552D) / 6" speaker (CS-563D) / 8" coaxial speaker (CS-584D);

Rated power 20 Watts (CS-552D), 30 Watts (CS-563D), 40 Watts (CS-584D);

Input voltage 100 Volt / 8 $\Omega$ , with power tabs select at 1/2 power, 1/4 power;

Sensitivity 88dB (CS-552D) / 89dB (CS-563D) / 90dB (CS-584D);

Frequency Response 90~20KHz (CS-552D) / 85~20KHz (CS-563D) / 80~20KHz (CS-584D)

Ceiling mount speaker, dog ear clamp mounting;

ABS material square frame with metal fire dome;

Cutout size 148x148mm (CS-552D) / 190x190mm (CS-563D) / 225x225mm (CS-584D)

Dimension 190x190x145mm (CS-552D) / 220x220x160mm (CS-563D) / 255x255x180mm (CS-584D)

### Specification

Model No.	CS-552D	CS-563D	CS-584D
Rated Power / Max Power	20W / 30W	30W / 45W	40W / 60W
Speaker	Coaxial 5" speaker	Coaxial 6" speaker	Coaxial 8" speaker
Input Voltage & Power Tabs	5W/10W/20W@100V / 8 $\Omega$	7.5W/15W/30W@100V / 8 $\Omega$	10W/20W/40W@100V / 8 $\Omega$
Sensitivity	88 dB	89 dB	90 dB
Frequency Response	90-20KHz	85-20KHz	80-20KHz
Mounting Method	Dog ear clamp		
Cutout Size	148X148 mm	190X190 mm	225X225 mm
Dimension	190x190X145 mm	220x220X160 mm	255x255X180 mm

## Ceiling Speaker CS-EN545 CS-EN546 CS-EN548



Fireproof ceiling speaker, designed in metal body and rear enclosure, with full range 5 inch, 6 inch and 8 inch speaker, rated power 6-10 Watts, use for commercial audio system or public address system (pa system) of input voltage 100 volt. Fast installation with 2 clamps. It is durable and practical and very competitive to satisfy small or medium sound system at low budget.

### Features

Full range 5" (CS-EN545) / 6" speaker (CS-EN546) / 8" speaker (CS-EN548);

Rated power 6 Watts (power tabs 1/2, 1/4), max power 10 Watts;

Input voltage 100 Volt;

Sensitivity 92dB;

Frequency Response 130~15KHz (CS-EN545) / 120~18KHz (CS-EN546) / 110~18KHz (CS-EN548)

Ceiling mount speaker, clamps fixture;

Metal material body and metal fireproof dome;

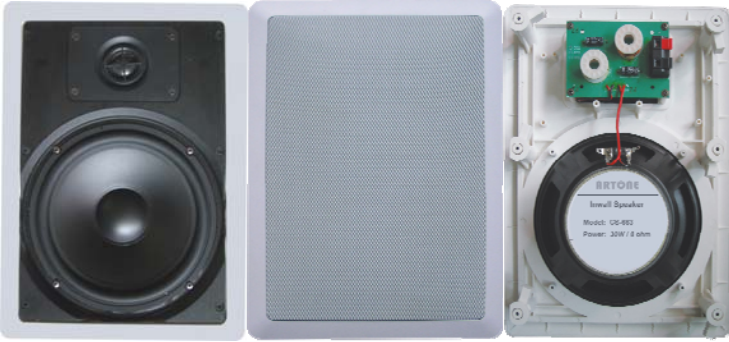
Cutout size 160mm (CS-EN545) / 204mm (CS-EN546) / 230mm (CS-EN548)

Dimension 180 x 133mm (CS-EN545) / 230 x 133mm (CS-EN546) / 270 x 133mm (CS-EN548)

### Specification

Model No.	CS-EN545	CS-EN546	CS-EN548
Rated Power / Max Power	6W / 10W	6W / 10W	6W / 10W
Speaker	Full range 5" speaker	Full range 6.5" speaker	Full range 8" speaker
Input Voltage	100V Line		
Sensitivity	92 dB	92 dB	92 dB
Frequency Response	130-15KHz	120-18KHz	110-18KHz
Mounting Method	Clamp		
Cutout Size	160 mm	204 mm	230 mm
Dimension	180 x 133 mm	230 x 133 mm	270 x 133 mm

## Ceiling Speaker CS-641 CS-652 CS-663 CS-684



Ceiling mount or inwall speaker, designed in ABS body and rectangular shape, 2-way 4 inch, 5 inch, 6 inch and 8 inch woofer speaker and 1" tweeter, rated power 10W, 20W, 30W and 40 Watts, use for commercial audio system or public address system (pa system) of input voltage 100 volt or 8Ω. Fast installation with 4 dog ear clamp. It is durable and practical and very competitive to satisfy middle or high level sound system.

### Features

4" + 1" (CS-641) / 5" + 1" (CS-652) / 6" + 1" (CS-663) / 8" + 1" 2-way speaker (CS-684);

Rated power 10 Watts (CS-641), 20 Watts (CS-652), 30 Watts (CS-663), 40 Watts (CS-684);

Input voltage 100 Volt or 8Ω;

Sensitivity 87dB (CS-641) / 88dB (CS-652) / 89dB (CS-663) / 90dB (CS-684);

Frequency Response 110~20KHz (CS-641) / 100~20KHz (CS-652) / 90~20KHz (CS-663) / 80~20KHz (CS-684)

Ceiling mount speaker, dog ear clamp mounting;

ABS material body;

Cutout size 90x115mm (CS-641) / 245x160mm (CS-652) / 275x185mm (CS-663) / 325x220mm (CS-684)

Dimension 222x148x68mm (CS-641) / 280x192x75mm (CS-652) / 310x223x85mm (CS-663) / 360x256x100mm (CS-684)

### Specification

Model No.	CS-641	CS-652	CS-663	CS-684
Rated Power / Max Power	10W / 20W	20W / 30W	30W / 45W	40W / 60W
Speaker	2-way 4" + 1" speaker	2-way 5" + 1" speaker	2-way 6" + 1" speaker	2-way 8" + 1" speaker
Input Voltage & Power Tabs	100V Line or 8Ω			
Sensitivity	87 dB	88 dB	89 dB	90 dB
Frequency Response	110-20KHz	100-20KHz	90-20KHz	80-20KHz
Mounting Method	Dog ear clamp			
Cutout Size	90x115 mm	245x160 mm	275x185 mm	325x220 mm
Dimension	222x148x68 mm	280x192x75 mm	310x223x85 mm	360x256x100 mm

## Marine Ceiling Speaker CS-M841 CS-M852 CS-M863



This series ceiling speaker are totally waterproof ceiling speaker for marine, boats or yachts, coaxial 4", 5" and 6" speaker driver and 20-40W power of sound allow it gives pleasant background music for commercial audio or public address. Screw mounting make it easy mount to ceiling.

### Specification

Model No.	CS-M841	CS-M852	CS-M863
Speaker	4" speaker	5.25" speaker	6" speaker
Power	20W	25W	30W
Input Voltage	8 ohm		
Sensitivity (1m/1w)	88 dB	89 dB	90 dB
Frequency Response	155~20KHz	95~20KHz	95~20KHz
Material & Finish	Plastic / White		
Cutout Size (mm)	105 mm	122 mm	147 mm
Weight (kg)	0.8	0.7	0.6